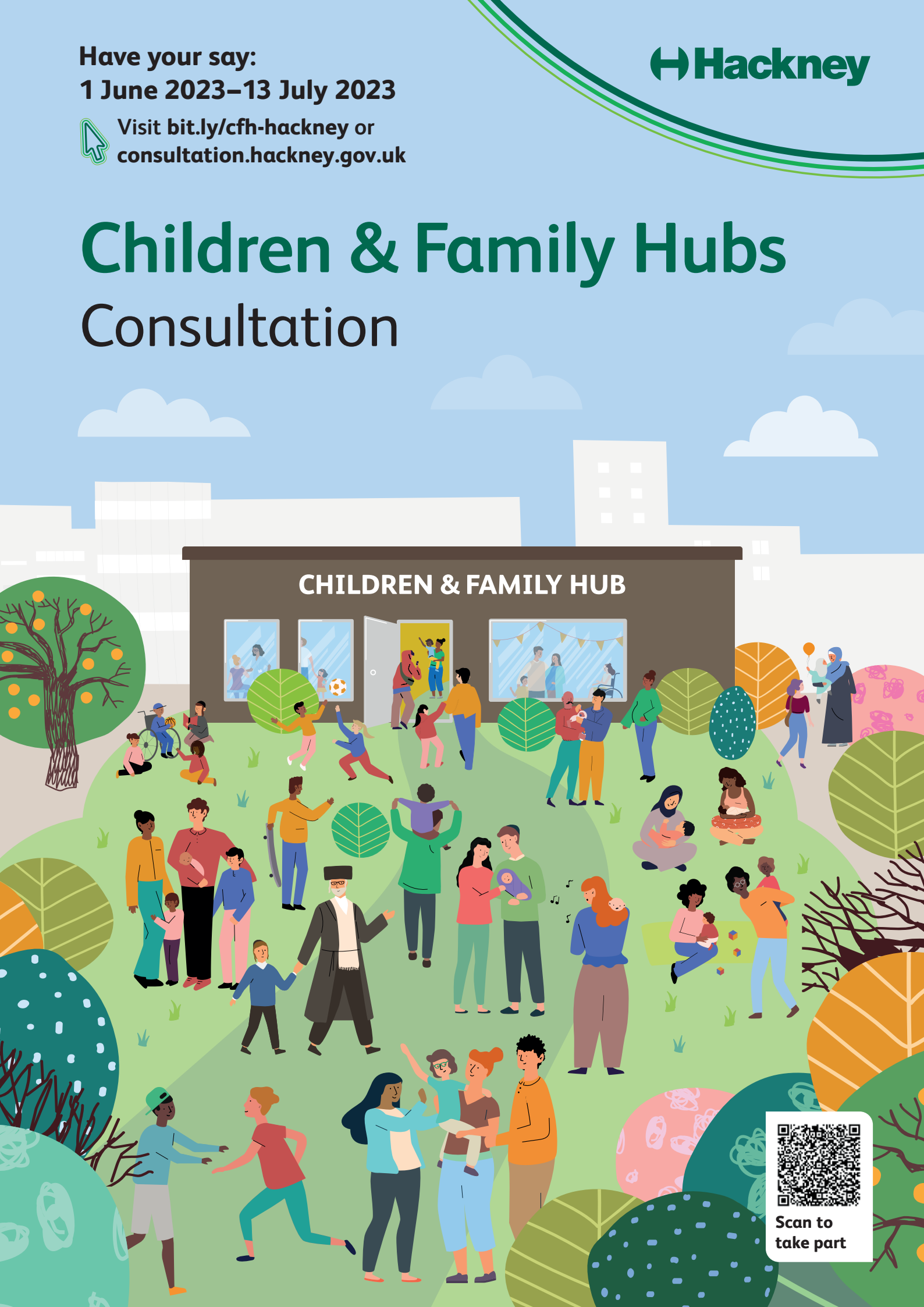


Have your say:
1 June 2023–13 July 2023



 Visit bit.ly/cfh-hackney or
consultation.hackney.gov.uk

Children & Family Hubs Consultation



Scan to
take part

Contents

Introduction	3
Background and context	4
– Children & Family Hubs: Drivers for Change	4
– Children & Family Hubs Engagement	8
Our proposals for Children & Family Hubs	8
– Vision	8
– Proposal	8
– What does a Children & Family Hub look like?	8
– How is this model different from the way children and families currently access services?	10
– Proposed changes to boundaries and multi-agency centres	10
– What does this mean for families?	14
Frequently Asked Questions	15

Accessibility statement

If you require this document in a different format, please email:

 consultation@hackney.gov.uk

We will consider your request and get back to you in the next five working days.

Introduction

We would like your feedback on the Council's model for Children & Family Hubs. We are consulting on how we develop some of our existing children's centres into four Children & Family Hubs, offering support for families with children up to 19 years old (up to 25 for young people with special educational needs and disabilities – SEND).

Please tell us your views on the proposals for Children & Family Hubs by 13 July 2023.

Hackney Council is committed to making sure our Children & Family Hubs support the needs of our children and their families from conception through to adulthood; providing targeted interventions and services to give children the best start in life.

The consultation is open to all Hackney residents. We welcome responses both from those who use the children's centre services and those who currently do not. It is important to hear your views about the key issues the council should consider when designing the hubs.

Background and context

Children & Family Hubs: Drivers for Change

In April 2022 the government announced that 75 local authorities would be taking part in the Start for Life and Family Hub programme. The programme is supported by a £300 million government investment up to 2025. In February 2023 the government formally announced that Hackney was one of the local authorities to be awarded a grant.

Children & Family Hubs offer information, help and support to families from conception up until age 19 (or 25 for young people with SEND). They bring together staff working across a range of different services, including the council, health services and voluntary and community organisations. The hubs will act as a 'one stop shop' to offer guidance and advice on a range of circumstances.

What does the Children & Family Hub grant cover?

Children's centres offer a wide range of services to support children under 5 years old and their families; including family support, infant feeding, mental health support, health services, advice and debt guidance, support into employment, housing support, partnerships with the voluntary sector, early years education and stay and play provision.

The Children and Family Hub funding will complement and enhance Hackney's existing children's centres offer. The additional funding provides support in the following areas;

Transformation

- Access, relationships, connection and capital spend

Start for Life services

- Perinatal mental health and infant relationships
- Infant feeding
- Parent and carer forums and publishing the start for life offer
- Home learning and early language support
- Parenting support.

Family Hub Transformation funding

Transformation

The funding for transformation will enable the development of four children's centres into Children & Family Hubs, offering support to children and their families from conception to 19 years (25 with SEND).

This is a co-design approach and follows an extensive period of engagement with children, families, staff and partners.

These four Children & Family Hubs will deliver an enhanced offer of universal and targeted services across health, early help and community services. This will include improved communication, marketing and a digital offer.

Staff across the partnership will have access to training and workforce development. There is some limited funding to support the infrastructure of the centres.



Family Hub Start for Life Funding

Perinatal Mental Health and Infant Relationships

Funding for parent-infant relationships and perinatal mental health will be used to promote positive early relationships and good mental wellbeing for families with babies up to 2 years old.

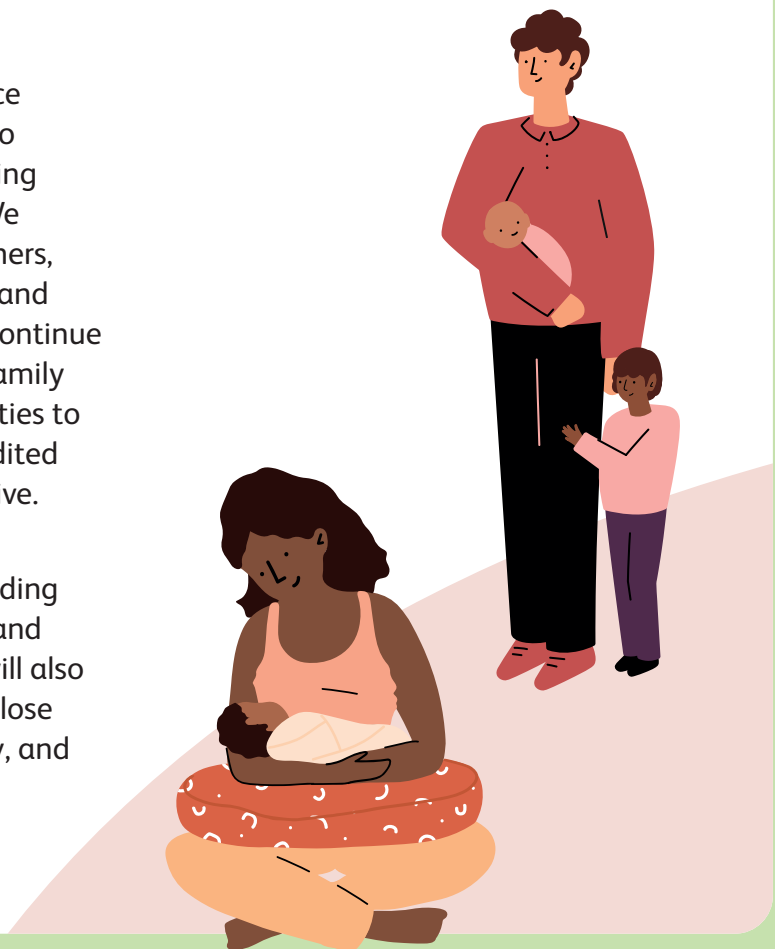
This will include parenting programmes focusing on attachment and attunement, increased perinatal mental health support, baby sessions, baby massage and weigh and play sessions.



Infant Feeding

We will deliver a blended offer of advice and support that will help all parents to understand the benefits of breastfeeding and meet their infant feeding goals. We will also provide support to enable fathers, co-parents and carers to feel included and able to support their partner. We will continue our work across all of our Children & Family Hubs, children's centres and communities to develop our services so they are accredited with the UNICEF breastfeeding initiative.

This will support pregnant women to recognise the importance of breastfeeding and early relationships for the health and wellbeing of their baby. The services will also support parents and carers to have a close and loving relationship with their baby, and know why this is important.



Parent and Carer Forums

We will establish Parent and Carer Forums in each of our Children & Family Hubs. This is a space where parents and carers will work together with local service commissioners to co-design and evaluate services.

This will help to ensure that babies and their families are at the centre of service design and delivery.



Home Learning and Early Language Support

We will use this funding to develop an offer of support to parents with preschoolers, aged 3–4 years old.

This will enable Hackney to provide a clear focus on supporting young children who were babies at the height of the pandemic. We will provide a range of home learning and targeted support.



Parenting Support

Our parenting support services will provide increased services to help all new and expectant parents make the transition to new parenthood as smooth as possible, with an emphasis on the importance of sensitive and attuned caregiving. The services will be both universal and targeted evidence based programmes.

This will include new parenting programmes, family support (for the whole family), parent champion programmes, and a digital parenting app which parents can access to get a wide range of advice, training and guidance to support their early attachments.



Children & Family Hubs Engagement

Hackney's vision for Children & Family Hubs has been informed by extensive engagement with families across the borough. Through workshops, interviews and a wider engagement survey over 200 parents, children and young people shared their view on service provision and what they need from Children &

Family Hubs. Over 70 parents and carers were engaged to codesign parent and carer panels. This insight has informed the proposed model for Children & Family Hubs and will be used to inform future ways of working for Council services and our partners.

Our proposals for Children & Family Hubs

Vision

Our aspiration is for every child to have the best start in life, grow up in a child friendly borough and receive the support they need when they need it. Children & Family Hubs will enable us to work with families to increase resilience and independence, supporting parents and carers in order to improve outcomes for children and families, and improve educational attainment.

Proposal

We propose to broaden the role of some of our 'multi-agency children's centres' into four 'Children & Family Hubs'. The hubs will offer support for families with children and young people aged up to 19 years old (up to 25 with SEND) rather than just offering support for families with young children. Key principles of access, connection and relationships are at the heart of Children & Family Hubs. This means that services can be responsive to family needs as they arise, taking a whole family approach and using resources flexibly and creatively to meet those needs.

This will make it easier for parents with children of different ages to access the support and information they need in one place.

The model will use a thriving network of children's centres, youth hubs, libraries, health and community centres and spaces in Hackney, all offering access to information, help and

support. Staff across a range of different services will work closely together to deliver support for families, taking an integrated approach.

What does a Children & Family Hub look like?

In this model, there will be four Children & Family Hubs across the borough. The Children & Family Hubs will work in partnership with a number of services and voluntary sector organisations to provide access to a wide range of activities for children and their families.

This service will work across the borough with:

- children's centres;
- youth hubs and Young Hackney services for children and young people aged 6–19, or up to 25 years for young people with SEND;
- adventure playgrounds;
- voluntary and community sector provision;
- schools and early years settings.

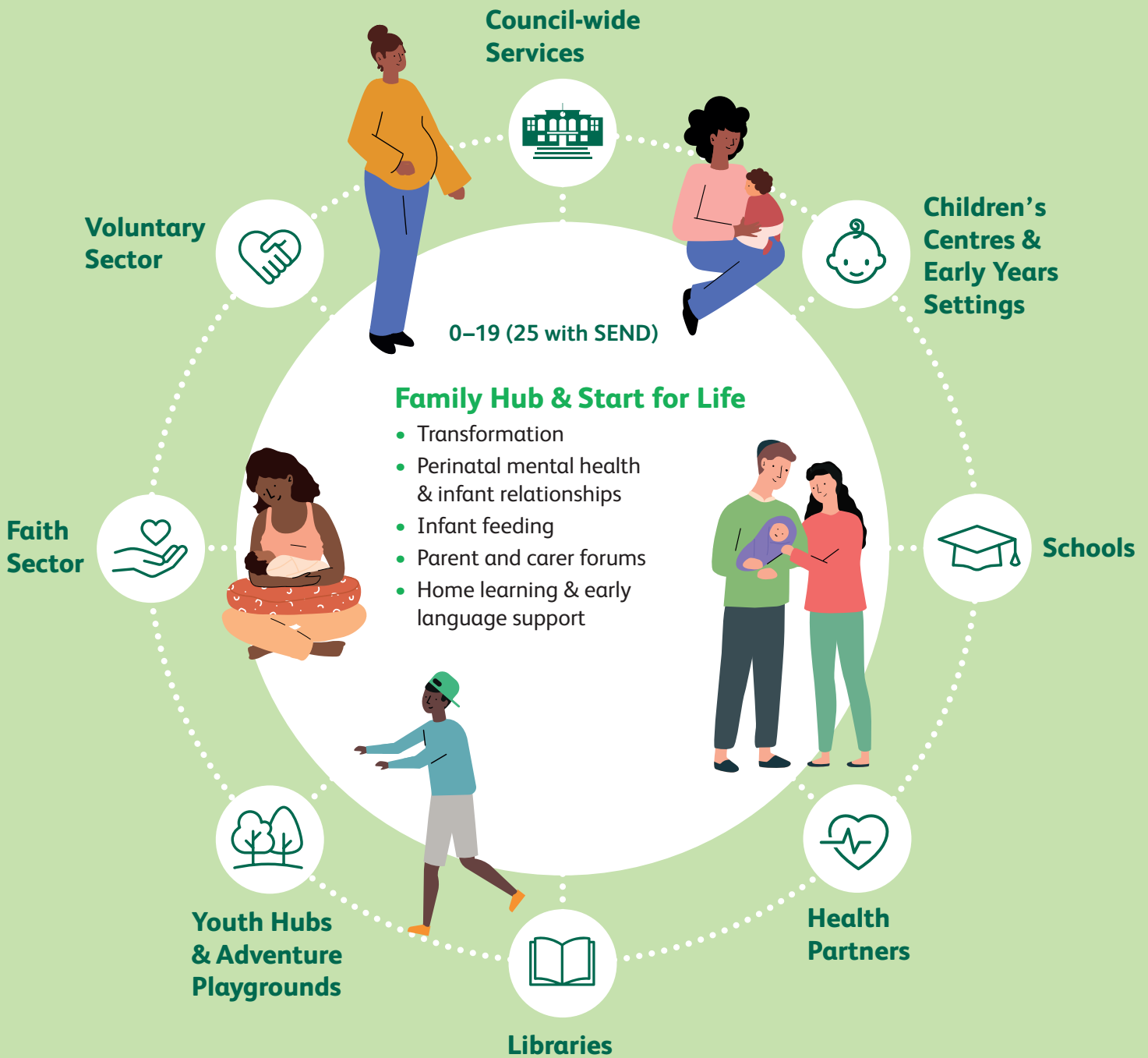
Children & Family Hubs staff will provide individual support within:

- schools;
- community settings or at our youth hubs;
- and will often provide support for families at home.

We call this a hub and spoke model.

Hub and Spoke model for the four Children & Family Hubs areas

- Springfield Park & Woodberry Wetlands
- Clissold Park & Hackney Downs
- Well Street Common & Hackney Marshes
- London Fields & Shoreditch Park and City



The four Children & Family Hubs will operate as a network of services (spokes) including; children's centres, libraries, youth hubs and green spaces, health, education, housing, the council and the community and voluntary sector.

Each area will provide coordinated services including; stay and play, parenting support, drug and alcohol and domestic violence support, mental health services, housing, debt and welfare advice, health services, adult learning, ESOL and employment advice.

How is this model different from the way children and families currently access services?

In our current model, our 20 children’s centres are organised into 6 geographical clusters. In the new Children & Family Hubs model children’s centres and family services will align geographically with City and Hackney Neighbourhoods:

 cityandhackneyneighbourhoods.org.uk

Across City and Hackney there are eight Neighbourhoods which bring together residents, community groups, GP practices, health providers, social care and the voluntary sector.

Hackney’s model for Children & Family Hubs would see the administration of children’s centres move from our current cluster model to the Neighbourhood arrangement. We believe this will help children’s centres and other family services work more effectively with community

partners to support the needs of local communities and address health inequalities.

There is a strong commitment from the Council, voluntary sector and health partners to organise and deliver services in a Neighbourhoods model of working.

The following services are already organised within the Neighbourhood areas:

- Primary Care Networks (PCNs)
- Adult community health nursing
- Community pharmacy
- Mental Health Neighbourhood blended teams



Moving the administration of our existing network to align with these services simplifies and improves services.

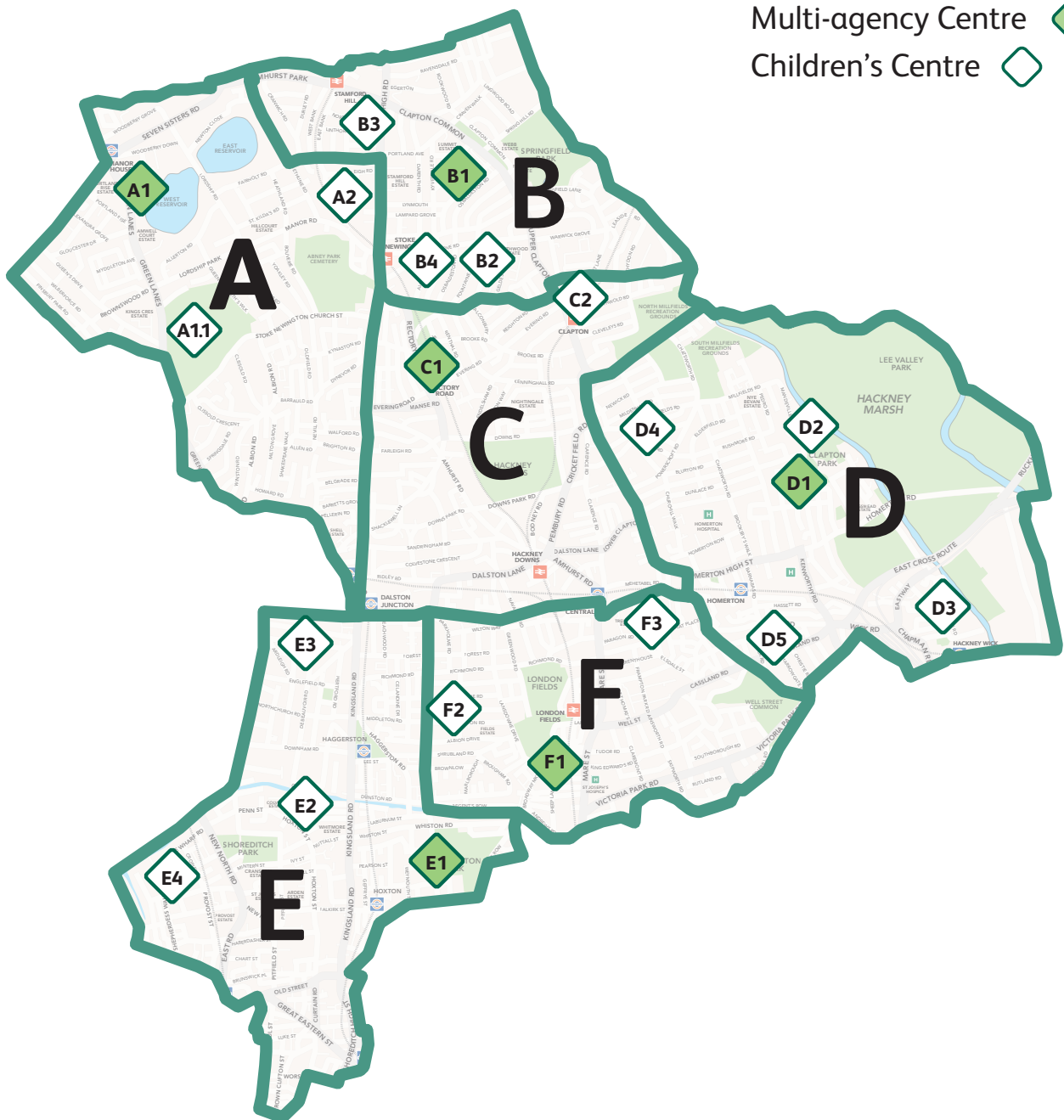
See the Frequently Asked Questions for more information about Hackney’s children’s centres.

Proposed changes to boundaries and multi-agency centres

Cluster	Children’s Centre Bold: multi-agency centre
A	• Woodberry Down
	• One O’Clock Club (part of Woodberry Down)
	• Hillside
B	• Oldhill
	• Fernbank
	• Lubavitch
	• Ihsan
C	• Linden
	• Comberton

Cluster	Children’s Centre Bold: multi-agency centre
D	• Daubeney
	• Clapton Park
	• Gainsborough
	• Millfields
	• Wentworth
E	• Sebright
	• Comet
	• Minik Kardes
	• Comet at Thomas Fairchild
F	• Ann Tayler
	• Mapledene
	• Morningside

Multi-agency Centre 
 Children's Centre 



Children's Centres

A1. Woodberry Down, N4 2NP

A1.1. One O'Clock Club (part of Woodberry Down)

A2. Hillside, N16 5QR

B1. Oldhill, N16 6LR

B2. Fernbank, N16 7EA

B3. Lubavitch, N16 5RL

B4. Ihsan, N16 6AA

C1. Linden, N16 7SH

C2. Comberton, E5 9PU

D1. Daubeny, E5 0EG

D2. Clapton Park, E5 0EP

D3. Gainsborough, E9 5ND

D4. Millfields, E5 0SQ

D5. Wentworth Nursery School, E9 5BN

Children's Centres

E1. Sebright, E2 8NP

E2. Comet Nursery School, N1 5RF

E3. Minik Kardes Community Nursery, N1 4BW

E4. Comet at Thomas Fairchild, N1 7HX

F1. Ann Tayler, E8 3RP

F2. Mapledene & Queensbridge, E8 3LE

F3. Morningside, E9 6LL

Bold: Multi-agency Centre

Proposed New Neighbourhood Areas

New Neighbourhoods Area
Springfield Park & Woodberry Wetlands

Children & Family Hub:
<ul style="list-style-type: none"> • Woodberry Down
<ul style="list-style-type: none"> • One O’Clock Club (part of Woodberry Down)
<ul style="list-style-type: none"> • Hillside
<ul style="list-style-type: none"> • Lubavitch
<ul style="list-style-type: none"> • Oldhill

New Neighbourhoods Area
Well Street Common & Hackney Marshes

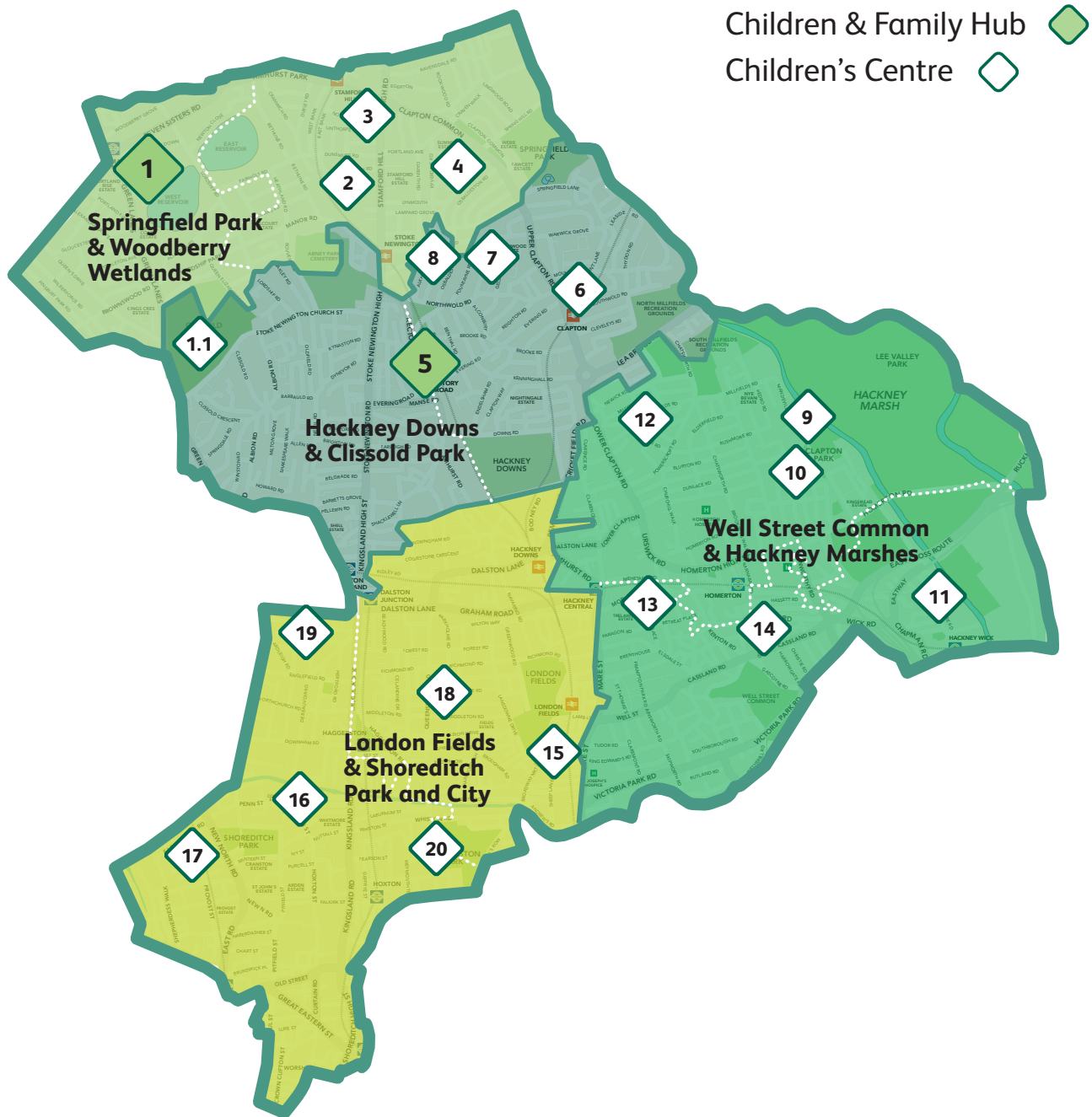
Children & Family Hub: To be confirmed
<ul style="list-style-type: none"> • Clapton Park
<ul style="list-style-type: none"> • Daubeney
<ul style="list-style-type: none"> • Gainsborough
<ul style="list-style-type: none"> • Millfields
<ul style="list-style-type: none"> • Morningside
<ul style="list-style-type: none"> • Wentworth

New Neighbourhoods Area
Hackney Downs & Clissold Park

Children & Family Hub:
<ul style="list-style-type: none"> • Linden
<ul style="list-style-type: none"> • Comberton
<ul style="list-style-type: none"> • Fernbank
<ul style="list-style-type: none"> • Ihsan

New Neighbourhoods Area
London Fields & Shoreditch Park and City

Children & Family Hub: To be confirmed
<ul style="list-style-type: none"> • Ann Tayler
<ul style="list-style-type: none"> • Comet Nursery School
<ul style="list-style-type: none"> • Comet at Thomas Fairchild
<ul style="list-style-type: none"> • Mapledene
<ul style="list-style-type: none"> • Minik Kardes
<ul style="list-style-type: none"> • Sebright



Neighbourhoods Area
Springfield Park & Woodberry Wetlands

- 1. Woodberry Down Children & Family Hub**
- 1.1. One O'Clock Club (part of Woodberry Down)
- 2. Hillside
- 3. Lubavitch
- 4. Oldhill

Neighbourhoods Area
Hackney Downs & Clissold Park

- 5. Linden Children & Family Hub**
- 6. Comberton
- 7. Fernbank
- 8. Ihsan

Neighbourhoods Area
Well Street Common & Hackney Marshes

- 9. Clapton Park
- 10. Daubeney
- 11. Gainsborough
- 12. Millfields
- 13. Morningside
- 14. Wentworth Nursery School

Neighbourhoods Area
London Fields & Shoreditch Park and City

- 15. Ann Talyer Children's Centre
- 16. Comet Nursery School
- 17. Comet at Thomas Fairchild
- 18. Mapledene & Queensbridge
- 19. Minik Kardes Community Nursery
- 20. Sebright

What does this mean for families?

All Hackney families can access children's centre services across the borough; this will not change under the new hubs model. Families will continue to access the services they currently use through children's centres and other family services. The new boundaries are for planning purposes, this will mean that some children's centres may fall under a new geographical area and be aligned to a new multi-agency children's centre, to be called a Children & Family Hub. This is largely an organisational change and for many families, the transition to the hubs model will not affect the way they use family services.

Some families who currently work with a family practitioner or team based in one centre, may be supported by a different practitioner or team following the transition to the new Neighbourhoods model. Should this happen we will make sure families who may be affected by the changes are supported through the transition and continue to be supported through the services they use. However, if the family has complex needs, they may continue to be supported by their existing practitioner.

Start for Life services are at the core of the Children and Family Hubs offer. Start for Life supports families and children through pregnancy and the first two years (the first 1,001 days). Children & Family Hubs will also offer services to families with children up to 19, or up to 25 for young people with SEND. This will help us to better provide support for families from conception throughout the early, primary and secondary years, and into early adulthood.

The families and young people we spoke to in our engagement shared that they wanted more provision and support for older children, young people, and children and young people with SEND. The hubs 0–19 (up to 25 with SEND) model will aim to address this need by improving access and awareness of families as their children grow up.



Frequently Asked Questions

What is a Children & Family Hub?

Hackney is proud of its children's centre provision and by participating in the government's Family Hubs programme we aim to improve services and outcomes for children and families.

Children & Family Hubs are one-stop-shops where families can access important services. Hubs deliver these services from conception, through a child's early years and until they reach the age of 19, or 25 for young people with special educational needs and disabilities (SEND).

An effective Children & Family Hub acts as a single 'front door' in the community, making it easier for families to get the help they need at the right time. This can include parenting support and infant feeding advice.

Children & Family Hubs are for families with children of all ages, but with great Start for Life (the critical 1,001 days from conception to age two) services at their core. This includes mental health advice for new mums in the weeks immediately before and after birth, and support for parents to build strong relationships with their babies.

Some support will be provided at the Hubs themselves, as well as in other children's centres, in Youth Hubs, in virtual spaces, working with the voluntary sector, or via home-visits to families. The Hubs are the entry point through which families can easily access all the services on offer.

We want to make sure every family knows what and where their local Children and Family Hub and satellite centres are, and know that, if they walk through the front door, they'll be welcomed by staff who are empowered to support their needs, and who can connect them with services that will be able to help.

How are Children & Family Hubs different from Hackney's current offer?

Hackney Council aspires to give all children the best start in life. We also want to continue to focus on supporting families who need extra help to overcome challenges they may face.

Children & Family Hubs will ensure we can better provide this support from conception throughout the early, primary and secondary years, and into early adulthood.

Currently, the support services provided by the Council – and its partners in health, settings and the community and voluntary sector – don't work as closely together as we think they could.

Instead, Children & Family Hubs will ensure the support we give is joined up, and children and families are better able to access the right help, at the right time.

How would a 0–19 (up to 25) mixed age-group model work?

Through our engagement with families, we know that some families are concerned about the idea of services for older children being provided in the same setting as younger children. Safeguarding will always be a priority in Children & Family Hubs and across Hackney's provision for children and young people.

Many services for older children and young people will be delivered across the neighbourhood in other locations – such as a youth hub. Children & Family Hubs will provide coordinated support for families who have children up to age 19 (or 25 for young people with SEND).

As with children's centres, universal services for the youngest children, such as stay and play opportunities, home learning, infant feeding and antenatal support, will remain a focus of the Hubs.

Some children's centres already successfully provide services for older children, such as holiday playschemes, family support and mental health services.

What is a Children's Centre?

A children's centre is a place where pregnant women and families with young children can go to engage in activities to support children's development, and receive the support they need.

The core purpose of children's centres is to improve outcomes for young children and their families, with a particular focus on the most disadvantaged families, and reduce inequalities between families in greatest need and their peers in:

- child development and school readiness;
- parenting aspirations and parenting skills; and,
- child and family health and life chances.

We believe that by moving to our proposed model we will continue to improve delivery of the core purposes by joining up services, improving how these are delivered and can be accessed.

In the proposals for the Children & Family Hubs model, children's centres will be connected to each of the four Children and Family Hubs where families will be able to access some support services.

Hackney's Children's Centres

Hackney provides a network of 20 Sure Start children's centres across the borough which offer a range of children and family services. The children's centres currently operate as a 'hub and spoke' model in six clusters across the borough. This means that there is a multi-agency children's centre in each cluster, which coordinates the wider offer of services for families across each geographical area.

11 of the children's centres offer childcare places, subsidised by the Council, all of which have been judged good or outstanding by Ofsted. Six centres are managed by the Council, 11 are under the management of schools, and three are managed by community organisations.

Hackney's children's centres provide a range of activities and support services including:

- Stay and play activities;
- Adult, family learning and English classes for speakers of other languages;
- Support into employment;
- Health Services;
- Early education;
- 1-2-1 family support;
- Parenting courses and support; and,
- Support to families in crisis through advice appointments.

Hackney's current children's centre model:

Cluster	Children's Centre	Council Subsidised Childcare	Non Subsidised Childcare, or Early Education
A	Woodberry Down	Yes	
	Hillside	Yes	
B	Oldhill	Yes	
	Fernbank	Yes	
	Lubavitch	Yes	
	Ihsan	No	Yes
C	Linden	Yes	
	Comberton	Yes	
D	Daubeney	No	Yes
	Clapton Park	Yes	Yes (Forest School)
	Gainsborough	No	Yes
	Millfields	No	
	Wentworth	No	Yes
E	Sebright	Yes	
	Comet	No	Yes
	Minik Kardes	No	Yes
	Comet at Thomas Fairchild	No	
F	Ann Tayler	Yes	
	Mapledene	Yes	
	Morningside	No	Yes

Where will the Children & Family Hubs be based?

The vision for Children & Family Hubs proposes to reorganise the children's centres into four neighbourhoods with a Children and Family Hub based in each neighbourhood.

This means that our 20 children's centres, which are currently organised into six geographical clusters, would be reorganised into four neighbourhoods to align with the eight City and Hackney and Primary Care Network Neighbourhoods. Within the neighbourhoods, we propose to broaden the role of some of our 'multi-agency children's centres' into four 'Children & Family Hubs'.

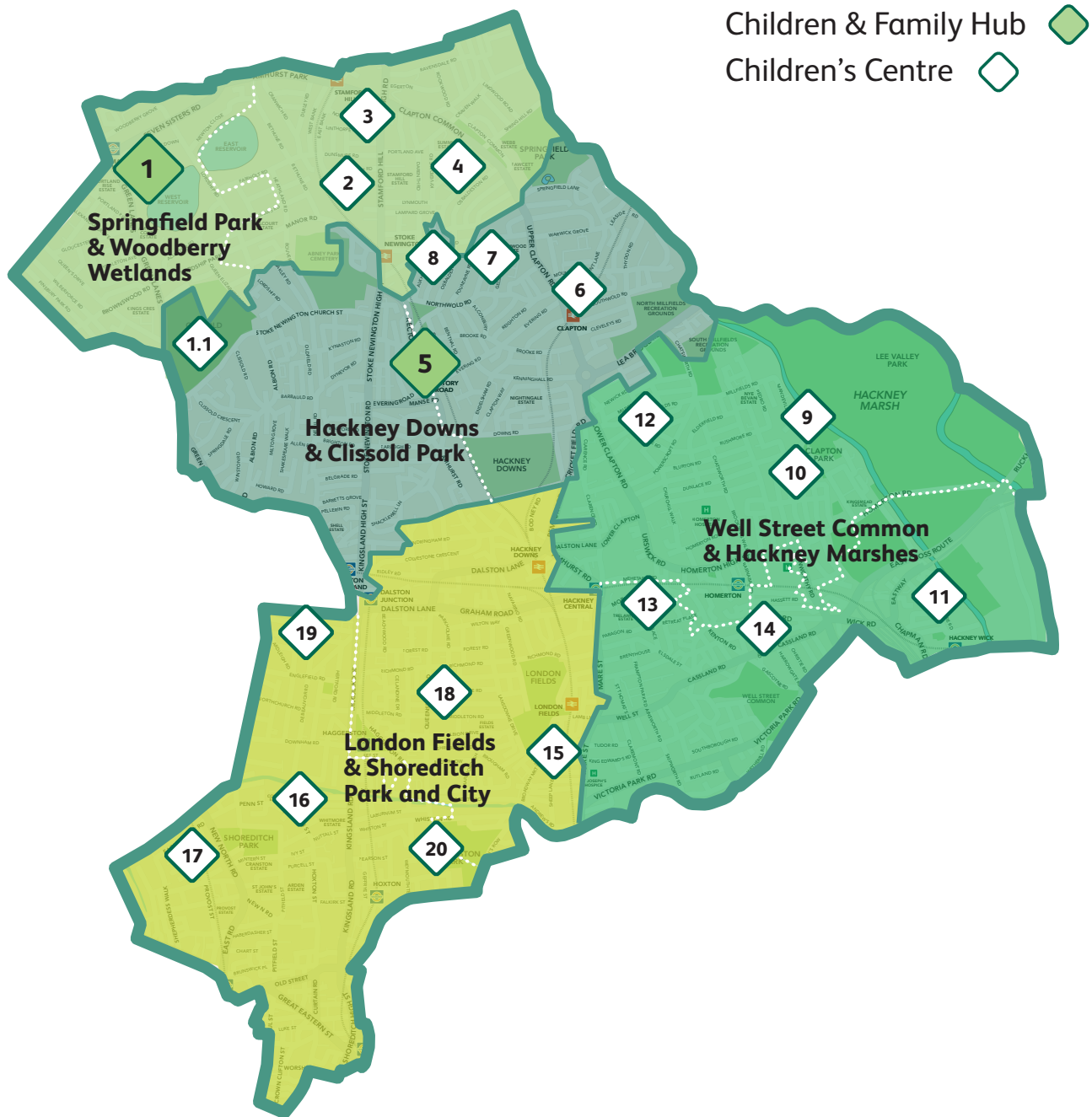
These existing children's centres – where services and professionals, such as teachers, midwives, social workers and therapists, work together to support children and their families – will offer a wider range of services and support for the whole family.

The support offered in the Hubs model may be provided at the Children & Family Hubs themselves, in other children's centres, in Youth Hubs, in virtual spaces, via home-visits to families, or in facilities operated by community health and the community sector to meet the needs of families across the borough.

What does the introduction of the Neighbourhoods model mean for children's centres?

The new neighbourhoods model will mean some children's centres will fall under a new multi-agency children's centre, to be called Children & Family Hubs. Children's centres will be reorganised into the four neighbourhoods, as explained above.





Neighbourhoods Area
Springfield Park & Woodberry Wetlands

- 1. Woodberry Down Children & Family Hub**
- 1.1. One O'Clock Club (part of Woodberry Down)
- 2. Hillside
- 3. Lubavitch
- 4. Oldhill

Neighbourhoods Area
Hackney Downs & Clissold Park

- 5. Linden Children & Family Hub**
- 6. Comberton
- 7. Fernbank
- 8. Ihsan

Neighbourhoods Area
Well Street Common & Hackney Marshes

- 9. Clapton Park
- 10. Daubeney
- 11. Gainsborough
- 12. Millfields
- 13. Morningside
- 14. Wentworth Nursery School

Neighbourhoods Area
London Fields & Shoreditch Park and City

- 15. Ann Talyer Children's Centre
- 16. Comet Nursery School
- 17. Comet at Thomas Fairchild
- 18. Mapledene & Queensbridge
- 19. Minik Kardes Community Nursery
- 20. Sebright

There are six multi-agency children’s centres. How will we decide which children’s centres become Children & Family Hubs?

We propose to re-purpose some of our existing multi-agency children’s centres and transform them into four Children & Family Hubs. In order to make these decisions there are some key factors we will need to consider, such as:

The current six multi-agency centres and their location within the neighbourhoods model;

- the size and suitability of the centres to accommodate the increased services and their co-location;
- data analysis and mapping of services in relation to the primary care network neighbourhoods programme.

What will happen to the multi-agency Children’s Centres that are not transformed into hubs?

They will continue to operate as children’s centres, working alongside Children and Family Hubs as part of the hub and spoke model. The centres continue to provide universal and targeted support services for families and children.

Have you made any decisions about the Children & Family Hubs?

Yes, there will be a phased approach to opening the Children & Family Hubs. Hackney’s Early Years Strategy set out our intention to broaden the role of some of our ‘multi-agency children’s centres’ into Children & Family Hubs. As part of Department for Education’s guidelines for the Family Hubs grant, we have been required to name at least one Children & Family Hub in Phase 1. The following centres have been considered in line with the key factors above.

Phase 1:

At the end of the consultation July 2023

- Linden Children & Family Hub
- Woodberry Down Children & Family Hub

Phase 2:

Autumn 2023 we propose to open an additional two Children & Family Hubs. In deciding which multi-agency centres will become Children & Family Hubs in the two undecided neighbourhoods, the Council will consider the key factors above, in addition to related comments provided by consultation participants.

- Ann Tayler or Sebright will be named as a site for the Children & Family Hub. The other centre will continue to deliver services alongside the Hub.
- Daubeney is being considered as a Children & Family Hub. The building is being assessed to understand its capacity to deliver the full service required for the Family Hubs model.

Why are we consulting?

The Council has legal duties under the Childcare Act 2006 to improve the wellbeing of young children within Hackney and reduce inequalities between them. Wellbeing relates to physical and mental health and emotional wellbeing; protection from harm and neglect; education, training and recreation; the contribution made by them to society and social and economic wellbeing.¹ We believe that introducing Children & Family Hubs means that we will improve our services for children and families, improve wellbeing and reduce inequalities.

We are required to consult when making changes to children’s centres. This consultation follows extensive engagement with local families, centre users, disadvantaged families and underrepresented groups, and staff, service providers and partners. The engagement has informed the proposed model and the consultation aims to provide service users, residents and stakeholders with the opportunity to share their views.

We are ensuring all families, including disadvantaged families and underrepresented groups, have the opportunity to participate in consultations. We hope that this consultation explains how the local authority will continue to meet the needs of families with children under five as part of any reorganisation of services. If you have any questions about this please contact:

 familyhubs@hackney.gov.uk

The proposals in the consultation are informed by the views captured in our extensive engagement with parents, families and young people. For this reason, the consultation will run for six weeks. The six week consultation period aims to give residents and stakeholders the opportunity to share their views on the proposed Children & Family Hubs model.

What would happen if the proposals for Children & Family Hubs are not adopted?

If we do not go ahead with adopting Children & Family Hubs, we will lose Start for Life funding granted by the Department for Health & Social Care and Department for Education. This will mean that we will not be able to use the funding to expand our offer and deliver some of the new services covered by the grant.

We believe that the model we are proposing best ensures that we improve the wellbeing of our children and reduce inequalities between young children in our area. It makes sense to build on our existing network of children’s centres. Hackney’s children’s centres offer excellent provision to children and families. The proposal to transform some of our multi-agency children’s centres into Children & Family Hubs aims to build on this excellent, existing structure. Using other buildings could be explored as an alternative to the current proposals. However, this would cost more and would take longer as the buildings may require adaptations. The proposals set out within the consultation document have been informed by engagement with families, young people, partners and providers who told us how much they value current service provision and recommended improvements to services.

Will any children’s centres be closed?

The transformation of children’s centres into Children and Family hubs is focused entirely on the development of the hubs and is not a review of the number of children’s centres in the borough.

Hackney Council has commissioned a review of childcare provision, delivered by 11 children’s centres across the borough. The purpose of the review is to understand how childcare could be delivered differently, maintaining the accessibility to families across Hackney, including children in need and children with special educational needs, whilst ensuring longevity through financial sustainability.

1. Detailed guidance is provided in the Department for Education’s publication “Early education and childcare Statutory guidance for local authorities April 2023” and “Sure Start Children’s Centres Statutory Guidance, Sure Start children’s centres statutory guidance, for local authorities, commissioners of local health services and Jobcentre Plus, April 2013.” The Council has to “have regard” to both sets of Guidance, which means we must take it into account, and should not depart from it unless they have good reason for doing so, when we are discharging our responsibilities under the Act. 1.

This work is due to be completed in summer, 2023. The Council has also set up a Commission to review Affordable Childcare. The outcomes of both reviews will influence future decisions on the provision of childcare. A consultation is likely to take place following the reviews and may impact on the future of some of the children's centres.

Why are we consulting separately on Children & Family Hubs and childcare at children's centres?

The development of Children & Family Hubs is part of a government initiative and is separate to the review of childcare. There are clear milestones to meet the grant requirements, including opening a Children & Family Hub in July 2023. The Government funding will be at risk if we delay this process.

Any future consultation on children's centres will take place following the independent review of the children's centres childcare provision.

How have you heard the views of children, families and key partners to date?

To help develop new ways of working for families and their children, Hackney Council spoke with just under 300 parents, carers, families and young people, and held engagement events with staff and with voluntary and community sector organisations.

Families told us they'd like:

- Access to information through a wide range of channels, both online and offline;
- wider support, in particular for families and children with SEND; and,
- resources and advice for families with older children.

You can find out more about what we learned from our communities here:



<https://news.hackney.gov.uk/developing-hackney-children-and-family-hubs-what-we-learned-from-our-communities/>

How are you making sure the views of underrepresented groups are included?

Within our engagement we worked with voluntary and community sector organisations to ensure we listened to seldom heard groups and families most in need of support.

We identified groups whose views we considered critical to understanding the needs of families and young people:

- Children and young people
- Fathers
- Single parents
- Working parents
- Parents of children with SEND
- Turkish and Kurdish parents and families
- African and Caribbean heritage parents and families
- Orthodox Jewish parents and families
- Marginalised disadvantaged groups at risk of poor education, health and life outcomes
- Low income families and those eligible for free early years entitlement
- Families with no recourse to public funds

We will make sure that the same groups are given the opportunity to share their views as part of the consultation process.

If you have any questions or would like more information about the proposals for Children & Family Hubs please email:



familyhubs@hackney.gov.uk



